

THE FIRE STATION
 Apartment 1, first floor
Two bedrooms

Internal area	134 sq m	1439 sq ft
Living & dining area	7.0 x 4.3m	23.0 x 14.1ft
Kitchen	3.1 x 4.3m	10.2 x 14.1ft
Master bedroom	7.9 x 5.6m	25.9 x 18.4ft*
Bedroom two	3.3 x 4.3m	10.8 x 14.1ft
Second living area	9.3 x 2.7m	30.5 x 8.9ft

*Includes dressing area and study niche

Floor areas are approximate.
 Plans and specifications are for indicative purposes only.



Kitchen

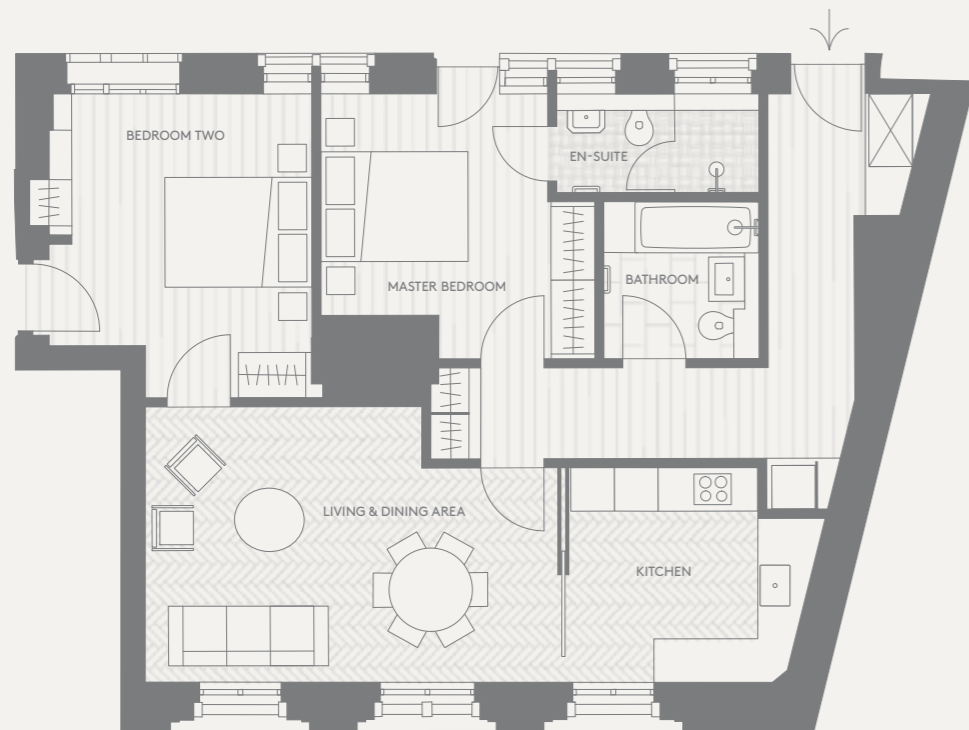
- Kitchen cabinetry and hardware custom-designed and unique to the development
- Quartzite natural stone worktop
- Mirrored backsplash with a bronze tint
- White ceramic under-mount sink
- Designer single lever tap
- Siemens dishwasher
- Siemens fridge freezer
- Miele induction hob
- Miele Pureline microwave/oven combi
- Miele Pureline single oven

Interior finishes

- Engineered oak parquet flooring in a herringbone pattern to living, kitchen and dining areas
- Engineered oak plank flooring laid in bedrooms and hall
- Custom-designed, integrated wardrobes to all bedrooms
- Siemens washing machine and separate condenser dryer
- Custom-designed ironmongery with brass rose and teak wood handle

Bathrooms

- Bathroom tiling: Calacatta Viola marble flooring and white matt ceramic wall tile laid in a herringbone pattern with tile skirting boards
- Bathroom fittings: ceramic pedestal basin, antique gold basin tap, wall-mounted mirror cabinet with lighting, antique gold towel warmer, classic back-to-wall toilet and inset bath with antique gold shower and bath fixtures
- Master en-suite tiling: custom-designed marble flooring in a mosaic pattern and white marble walls
- Master en-suite fittings: ceramic basin on antique gold console, antique gold tap, wall-mounted mirror cabinet with lighting, antique gold towel warmer, back-to-wall toilet and shower with antique gold fixtures



THE FIRE STATION
 Apartment 2, first floor
Two bedrooms

Internal area	84 sq m	902 sq ft
Living & dining area	5.7 x 3.8m	18.7 x 12.5ft
Kitchen	3.5 x 3.0m	11.5 x 9.8ft
Master bedroom	3.8 x 3.6m	12.5 x 11.8ft
Bedroom two	3.9 x 4.2m	12.8 x 13.8ft

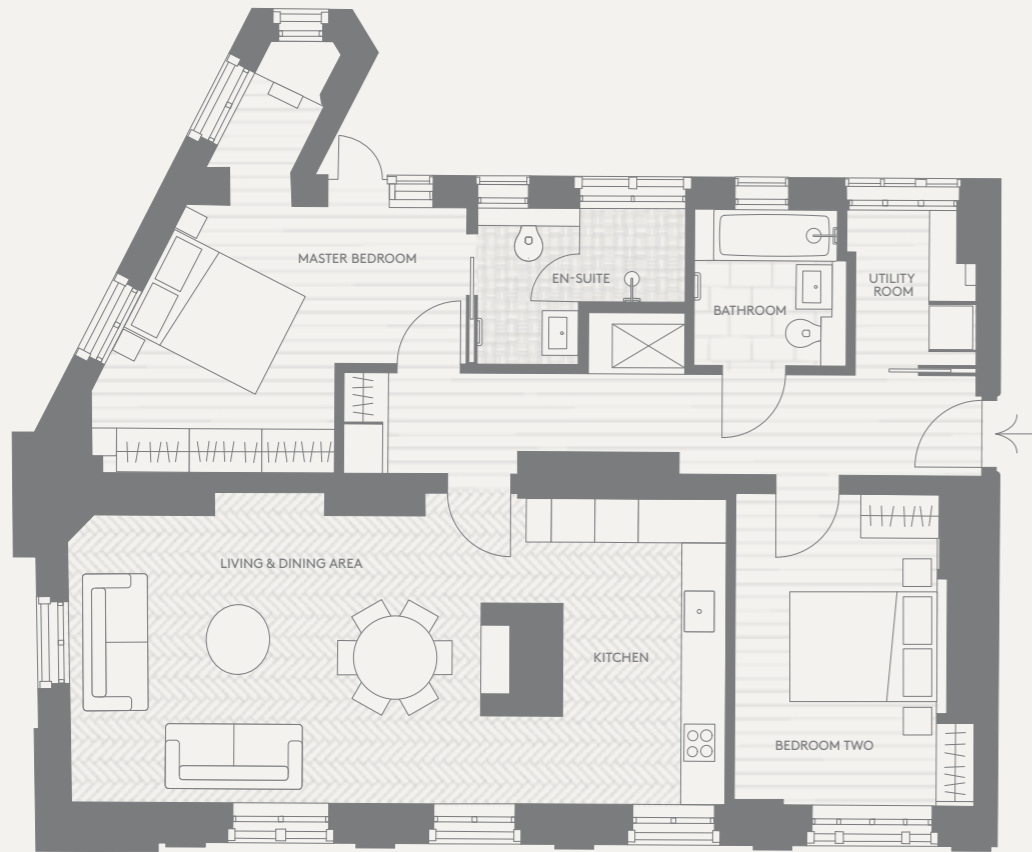


Floor areas are approximate.
 Plans and specifications are for indicative purposes only.

- Kitchen**
- Kitchen cabinetry and hardware custom-designed and unique to the development
 - Quartzite natural stone worktop
 - Mirrored backsplash with a bronze tint
 - White ceramic under-mount sink
 - Designer single lever tap
 - Siemens dishwasher
 - Siemens fridge freezer
 - Miele induction hob
 - Miele Pureline microwave/oven combi
 - Miele Pureline single oven

- Interior finishes**
- Engineered oak parquet flooring in a herringbone pattern to living, kitchen and dining areas
 - Engineered oak plank flooring laid in bedrooms and hall
 - Custom-designed, integrated wardrobes to all bedrooms
 - Siemens washing machine and separate condenser dryer
 - Custom-designed ironmongery with brass rose and teak wood handle

- Bathrooms**
- Bathroom tiling: Calacatta Viola marble flooring and white matt ceramic wall tile laid in a herringbone pattern with tile skirting boards
 - Bathroom fittings: ceramic pedestal basin, antique gold basin tap, wall-mounted mirror cabinet with lighting, antique gold towel warmer, classic back-to-wall toilet and inset bath with antique gold shower and bath fixtures
 - Master en-suite tiling: custom-designed marble flooring in a mosaic pattern and white marble walls
 - Master en-suite fittings: ceramic basin on antique gold console, antique gold basin tap, wall-mounted mirror cabinet with lighting, antique gold towel warmer, classic back-to-wall toilet and shower with antique gold fixtures



THE FIRE STATION
 Apartment 3, second floor
Two bedrooms

Internal area	100 sq m	1077 sq ft
Living & dining area	6.2 x 4.3m	20.3 x 14.1ft
Kitchen	2.9 x 4.2m	9.5 x 13.8ft
Master bedroom	4.9 x 5.9m	16.1 x 19.4ft*
Bedroom two	3.3 x 4.3m	10.8 x 14.1ft

*Includes dressing area and study niche

Floor areas are approximate.
 Plans and specifications are for indicative purposes only.



Kitchen

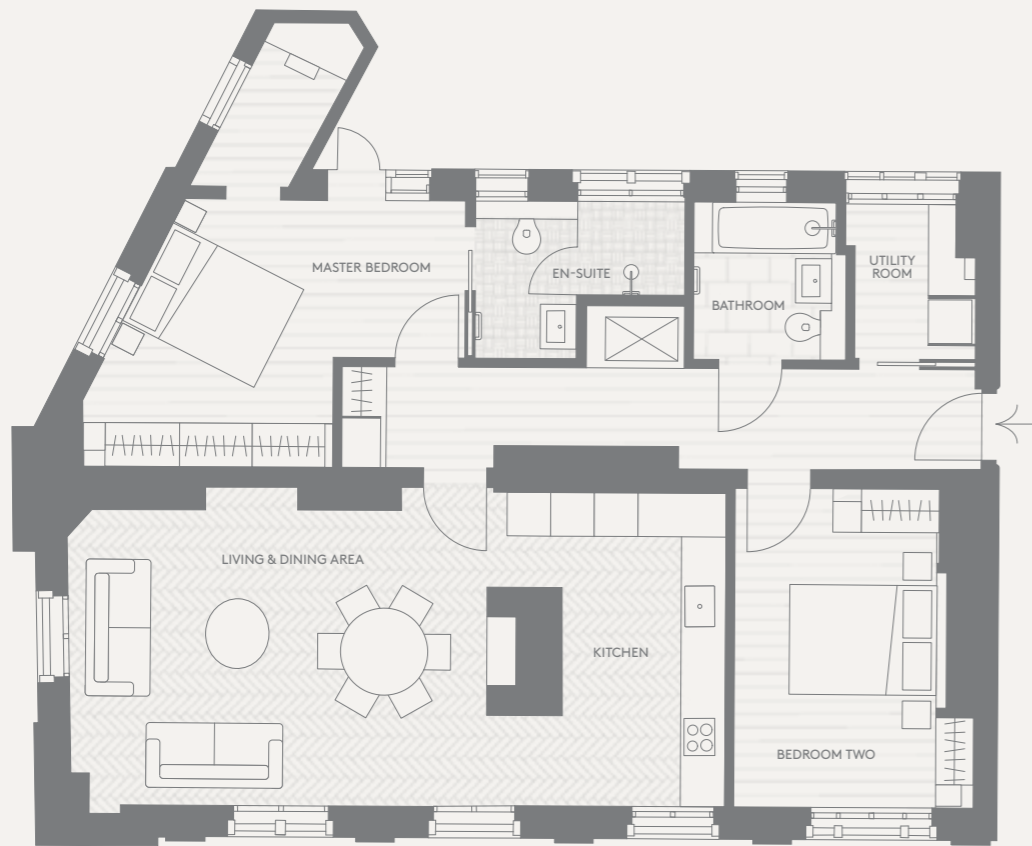
- Kitchen cabinetry and hardware custom-designed and unique to the development
- Quartzite natural stone worktop
- Mirrored backsplash with a bronze tint
- White ceramic under-mount sink
- Designer single lever tap
- Siemens dishwasher
- Siemens fridge freezer
- Miele induction hob
- Miele Pureline microwave/oven combi
- Miele Pureline single oven

Interior finishes

- Engineered oak parquet flooring in a herringbone pattern to living, kitchen and dining areas
- Engineered oak plank flooring laid in bedrooms, and hall
- Custom-designed, integrated wardrobes to all bedrooms
- Siemens washing machine and separate condenser dryer
- Custom-designed ironmongery with brass rose and teak wood handle

Bathrooms

- Bathroom tiling: Calacatta Viola marble flooring and white matt ceramic wall tile laid in a herringbone pattern with tile skirting boards
- Bathroom fittings: ceramic pedestal basin, antique gold basin tap, wall-mounted mirror cabinet with lighting, antique gold towel warmer, classic back-to-wall toilet and inset bath with antique gold shower and bath fixtures
- Master en-suite tiling: custom-designed marble flooring in a mosaic pattern and white marble walls
- Master en-suite fittings: ceramic basin on antique gold console, antique gold basin tap, wall-mounted mirror cabinet with lighting, antique gold towel warmer, classic back-to-wall toilet and shower with antique gold fixtures



THE FIRE STATION
 Apartment 4, third floor
Two bedrooms

Internal area	102 sq m	1100 sq ft
Living & dining area	5.9 x 4.4 m	19.4 x 14.4ft
Kitchen	3.2 x 4.3 m	10.5 x 14.1ft
Master bedroom	5.0 x 6.1 m	16.4 x 20.0ft*
Bedroom two	3.3 x 4.4 m	10.8 x 14.4ft

*Includes dressing area and study niche

Floor areas are approximate.
 Plans and specifications are for indicative purposes only.



Kitchen

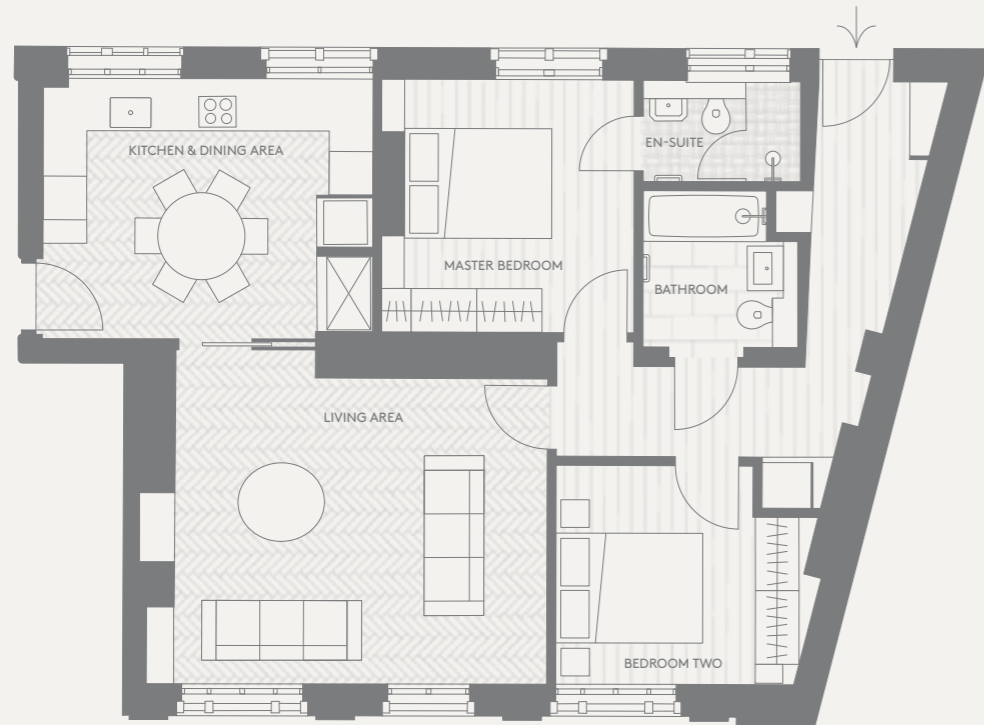
- Kitchen cabinetry and hardware custom-designed and unique to the development
- Quartzite natural stone worktop
- Mirrored backsplash with a bronze tint
- White ceramic under-mount sink
- Designer single lever tap
- Siemens dishwasher
- Siemens fridge freezer
- Miele induction hob
- Miele Pureline microwave/oven combi
- Miele Pureline single oven

Interior finishes

- Engineered oak parquet flooring in a herringbone pattern to living, kitchen and dining areas
- Engineered oak plank flooring laid in bedrooms, and hall
- Custom-designed, integrated wardrobes to all bedrooms
- Siemens washing machine and separate condenser dryer
- Custom-designed ironmongery with brass rose and teak wood handle

Bathrooms

- Bathroom tiling: Calacatta Viola marble flooring and white matt ceramic wall tile laid in a herringbone pattern with tile skirting boards
- Bathroom fittings: ceramic pedestal basin, antique gold basin tap, wall-mounted mirror cabinet with lighting, antique gold towel warmer, classic back-to-wall toilet and inset bath with antique gold shower and bath fixtures
- Master en-suite tiling: custom-designed marble flooring in a mosaic pattern and white marble walls
- Master en-suite fittings: ceramic basin on antique gold console, antique gold basin tap, wall-mounted mirror cabinet with lighting, antique gold towel warmer, classic back-to-wall toilet and shower with antique gold fixtures



THE FIRE STATION
 Apartment 6, third floor
Two bedrooms

Internal area	87 sq m	935 sq ft
Kitchen & dining area	4.5 x 3.6m	14.8 x 11.8ft
Living area	5.5 x 4.6m	18.0 x 15.1ft
Master bedroom	3.5 x 3.5m	11.5 x 11.5ft
Bedroom two	3.7 x 3.0m	12.1 x 9.8ft

Floor areas are approximate.
 Plans and specifications are for indicative purposes only.



- Kitchen**
- Kitchen cabinetry and hardware custom-designed and unique to the development
 - Quartzite natural stone worktop
 - Mirrored backsplash with a bronze tint
 - White ceramic under-mount sink
 - Designer single lever tap
 - Siemens dishwasher
 - Siemens fridge freezer
 - Miele induction hob
 - Miele Pureline microwave/oven combi
 - Miele Pureline single oven

- Interior finishes**
- Engineered oak parquet flooring in a herringbone pattern to living, kitchen and dining areas
 - Engineered oak plank flooring laid in bedrooms and hall
 - Custom-designed, integrated wardrobes to all bedrooms
 - Siemens washing machine and separate condenser dryer
 - Custom-designed ironmongery with brass rose and teak wood handle

- Bathrooms**
- Bathroom tiling: Calacatta Viola marble flooring and white matt ceramic wall tile laid in a herringbone pattern with tile skirting boards
 - Bathroom fittings: ceramic pedestal basin, antique gold basin tap, wall-mounted mirror cabinet with lighting, antique gold towel warmer, classic back-to-wall toilet and inset bath with antique gold shower and bath fixtures
 - Master en-suite tiling: custom-designed marble flooring in a mosaic pattern and white marble walls
 - Master en-suite fittings: ceramic basin on antique gold console, antique gold basin tap, wall-mounted mirror cabinet with lighting, antique gold towel warmer, classic back-to-wall toilet and shower with antique gold fixtures